



882-3



882-3P



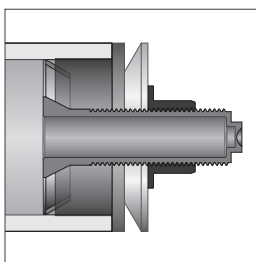
882-115

Fill & drain valve connects male garden hose thread to Test Titan stem. Fill through the stem and close valve to hold test. Attach hose and open valve for controlled drain-down.

Test Titan™

Mechanical Test Plug

- Proven performance, improved design
- For use in both pipe end and cleanout threads – size specific
- Hollow, male hose thread stem allows for fill/drain through the plug
- Non-slip shoulder prevents spinning
- 100% non-corrosive, strong and durable



Fill and drain the system through the Test Titan's™ hollow stem.



Use a $\frac{9}{16}$ " drill bit or cut off the tip with a hacksaw to access the hollow stem.



Stem thread is $\frac{3}{4}$ " male hose thread. Connects easily to a standard garden hose.



The Pneumatic Test Titan, with an integral brass air valve, makes air testing faster and easier. Stay clear of plug while under pressure.



Polypro wingnut, ABS disc and stem, soft PVC gasket – simple and durable.

Related Products

High-Pressure Hand Pump

p 414

Item No	Size	DWV Pipe	FIP Threads	Pkg	Min Qty	Case Qty
PIPE & CLEANOUT TEST PLUG						
882-1	1½"	✓	✓	C*	10	10
882-2	2"	✓	✓	C*	10	10
882-3	3"	✓	✓	C*	10	10
882-35	3½"		✓	C*	10	10
882-4	4"	✓		C*	10	10
882-41	4"		✓	C*	10	10
PNEUMATIC TEST PLUG WITH AIR VALVE						
882-1P	1½"	✓	✓	B	10	10
882-2P	2"	✓	✓	B	10	10
882-3P	3"	✓	✓	B	10	10
882-4P	4"	✓		B	10	10
ACCESSORIES						
882-115	Brass fill & drain valve – FSHT × FSHT			B	1	25